



DELOREAN MOTOR CARS OF AMERICA
Division of DeLorean Motor Company

SERVICE BULLETIN

NUMBER SC-06-7/82

ISSUED 7/16/82

CATEGORY: SAFETY CAMPAIGN

ATTENTION: ALL DMC DEALERS/SERVICE MANAGERS

SUBJECT: SAFETY CAMPAIGN NO. RA-0003 (RECALL)
INERTIA SWITCH
ALL 1981 MODEL YEAR VEHICLES - VIN 560-7199
1982 MODEL YEAR VEHICLES - VIN10001-11127

DMC is initiating the above referenced safety campaign because it has been determined that a safety related problem exists with the inertia switch.

There are two modes of malfunction:

- A) The inertia switch can go to an open circuit condition which will result in the fuel pump becoming inoperative.
- B) In the event of a collision, the inertia switch's internal contacts may remain closed and therefore would not interrupt fuel pump operation.

We are requesting DMC dealers to replace and relocate the inertia switch on all 1981 model year DMC vehicles from VIN 560 to 7199 and replace the inertia switch on 1982 model year vehicles from VIN 10001 to 11127.

NOTE: The inertia switch for 1982 was relocated in production.

Notice: Vehicles modified at the Quality Assurance Centers prior to shipment to dealers can be identified by white paint markings on the inertia switches. However, dealers should verify this modification on all vehicles within the above VIN range during pre-delivery inspection.

Enclosed please find:

- 1) A copy of the notification letter sent to all De Lorean owners.
- 2) Repair procedures and reimbursement instructions.

Continued. . .

PART SUPPLY

An initial supply of five kits (P/N 109277) will be shipped to you free of charge for arrival by July 19, 1982.

Additional kits can be ordered through the DMC Parts Department. These additional kits will also be shipped free of charge.

IMPORTANT NOTICE

ALL CAMPAIGN PART ORDERS MUST INCLUDE THE CORRESPONDING VIN(S) OF THE VEHICLES REQUIRING THE KITS.

VIN LISTING

A listing of vehicles assigned to your dealership for repair and follow up showing VIN(S), owners names and addresses will be mailed to you.

For further information concerning recall campaign procedures, please refer to "Dealer Functions" in your DMC Service Procedures Manual, Section 6, Subsection 02, Page 2.

It is essential to bring this campaign to a rapid conclusion. We request that all DMC dealers actively follow up with owners and perform this campaign as quickly as possible.

Please inform all personnel accordingly.

R.D. Whitehouse
National Service Manager

RDW/psg

Attachments
Enclosures



IMPORTANT - SAFETY RECALL NOTICE

Dear De Lorean Owner:

This notice is sent to you in accordance with the requirements of the National Traffic and Motor Vehicle Safety Act.

De Lorean Motor Company has determined that a defect which relates to motor vehicle safety exists in the fuel cutoff system of 1981 and 1982 De Lorean vehicles. An inertia switch designed to cut off the fuel pump during accidental impact may not operate properly, allowing the fuel system to continue in operation after an accident with possible fire hazard.

De Lorean Motor Company will correct the defect without charge by replacement of the inertia switch at any authorized De Lorean dealer. The estimated repair time is under 30 minutes. Dealers will receive necessary parts and instructions by July 19, 1982. Contact your dealer immediately for an appointment.

If you are not satisfied with the service you receive, please notify us immediately. If you no longer own your De Lorean, please complete and mail the enclosed postage free reply card. If you believe that De Lorean Motor Company or your dealer has failed or is unable to perform this work without charge or within a reasonable time, you may submit a complaint to the Administrator, National Highway Traffic Safety Administration, Washington, D.C. 20590, or you may call the toll free Auto Safety Hotline at 800-424-9393 (Washington, D.C. area residents call 426-0123).

Sincerely,

DE LOREAN MOTOR COMPANY

RA-0003
#82V-030
7/16/82

PROCEDURES - 1981 MODEL

- 1) To gain access to the mounting location, partially remove the carpeting from the hood release handle area of the left kick panel.
- 2) With ignition switch off, disconnect the electrical connector, partially remove the service interval mileage counter bracket located in the driver's footwell to gain access and remove the inertia switch.

NOTE: Retain the removed switch for return shipment.

- 3) Using a "broken line" portion of the diagram in Figure 1 as a template, mark the two (2) pilot hole locations as indicated.
- 4) Drill two 3.9 mm (5/32 inch) pilot holes at the marked positions.
- 5) Position and secure the new inertia switch (P/N 111209) with the supplied screws (P/N SP 10828) in its new location.

NOTE: New switches can be identified by a white paint marking on the face of the switch body.

- 6) Connect the electrical connector to the inertia switch.
- 7) Perform the following test procedures:
 - a) With the inertia switch plunger in the down position, start the engine.
 - b) With the engine running, lift the inertia switch plunger - the engine should stall.
- 8) Reset the switch by depressing its plunger (down position).
- 9) Reposition the carpeting.

PROCEDURES - 1982 MODEL

The 1982 model year vehicles have the inertia switches in the re-located position, therefore, only replacement is required.

PARTS REQUIRED

1 Complete Kit P/N 109277

Kit includes:

<u>QTY</u>	<u>PART</u>	<u>NUMBER</u>
1	Inertia Switch	111209
2	Screws	SP10828

REPORTING/REIMBURSEMENT

IMPORTANT NOTICE

IN ORDER TO AVOID ANY DELAY IN CREDIT DUE TO AN IMPROPERLY SUBMITTED SERVICE TRANSACTION CLAIM, CAREFULLY AND COMPLETELY SUBMIT YOUR CLAIM AS INDICATED BELOW.

Complete a DMC General Service Transaction for each vehicle.
(See Service Procedures Manual, Section 4, Subsection 08, Page 1 and 2 for general instructions.)

Enter Specifically

Transaction Code	Line B-1	30		
Campaign Code	Line B-12	RA-0003	4	Vehicle Inspected and Repaired
Campaign Code	Line B-12	RA-0003	5	Vehicle Scrapped - Total Loss
Campaign Code	Line B-12	RA-0003	6	Owner Does Not Comply With Dealer Follow Up

Labor Operation Numbers	03668 (1981) - Time - 0.4
	03669 (1982) - Time - 0.2
	109277 Qty 1 N.C. (Supplied Free Of Charge)

SAMPLE

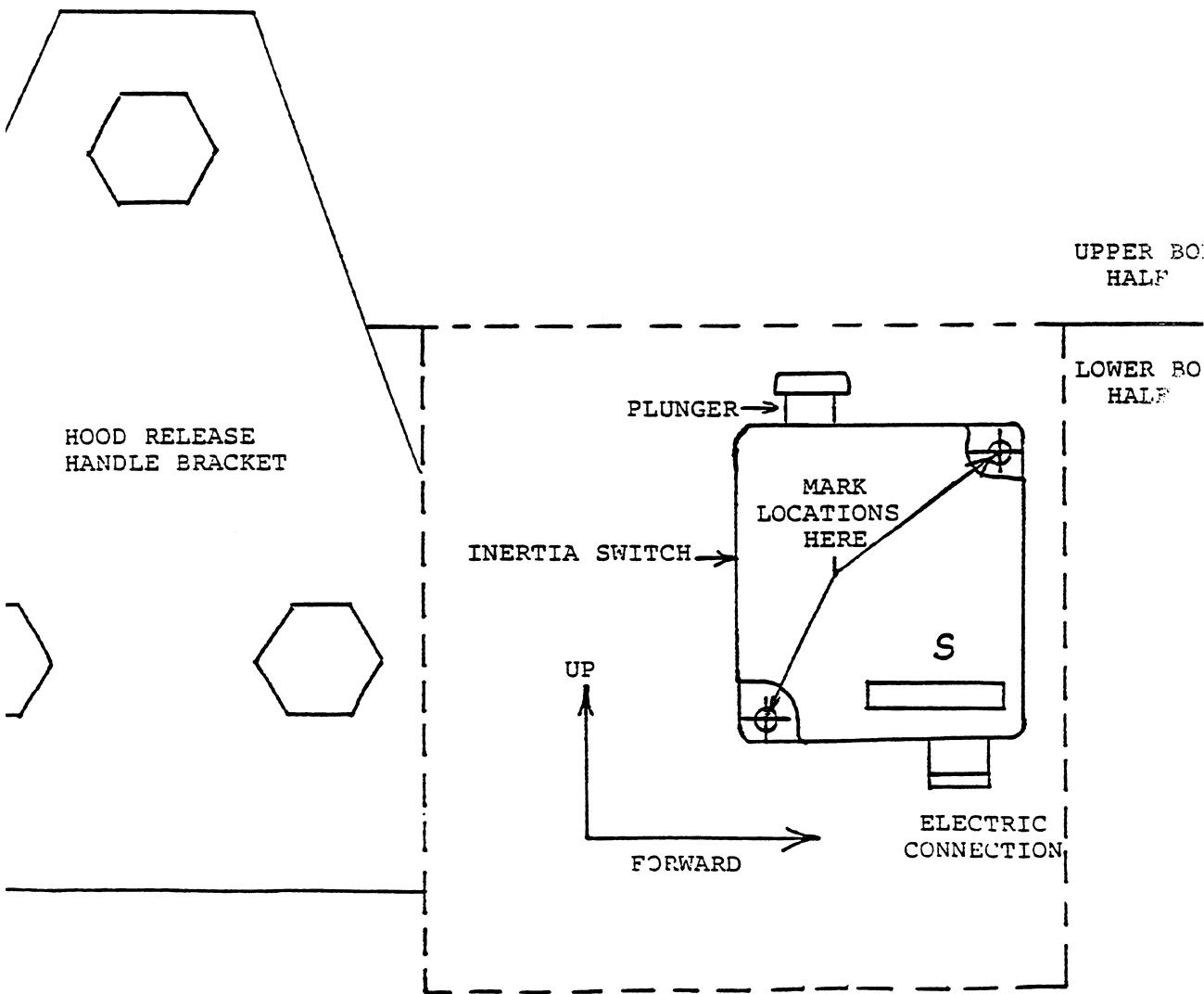


FIGURE 1
(actual size)